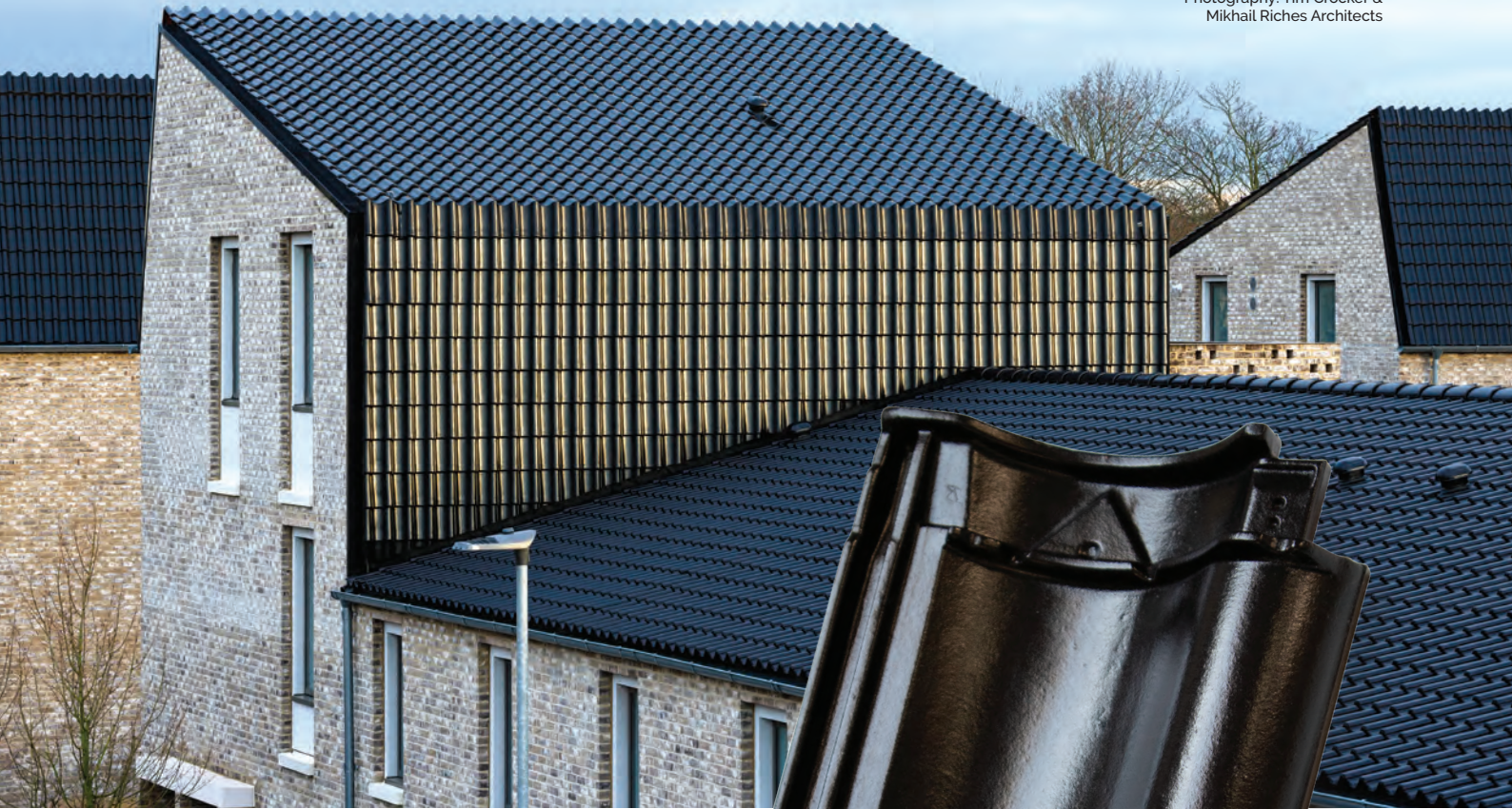


Crest Bricks and Roofing Tiles Supplied to Britain's Best New Building 2019 Winner - Goldsmith Street wins RIBA Stirling Prize



Photography: Tim Crocker & Mikhail Riches Architects



At Crest we believe our products transform buildings into something remarkable. The amazing project at Goldsmith Street, Norwich showcases how inspirational architecture and good quality building products can complement each other into creating award winning developments.

Goldsmith Street, Norwich: Award winning development showcasing Crest's H14 interlocking black gloss clay tile & Crest's Belgravia Buff & Grosvenor Grey Multi bricks.



www.crest-bst.co.uk

crest
NELSKAMP
ROOFING TILES



Unlocking creativity with Crest

Whether you are an architect, developer, merchant, builder, or even looking to self-build, Crest are confident that from their extensive product portfolio, you will be able to make the ideal selection from their superb range of bricks, blocks and Nelskamp roofing tiles.

The city of Norwich held an international RIBA Competition in 2008 to select architects and the right scheme for the site, which Riches Hawley Mikhail won. The architects led by David Mikhail & Annalie Riches have a talented team that live & breathe each project. David Mikhail from Mikhail Riches says "We're known for unlocking the potential of any site with creativity & strong focus towards a low-energy future, we believe we have created something very special for the new community of Goldsmith Street for example; the existing green links are to be reinforced with a landscape scheme which extends beyond the boundaries.

A shared 'alley' encouraging small children's play and communal gathering is accessible from back gardens – a secure place which only key holders (residents) can access". Mikhail Riches deliver outstanding design and have fun doing it which has been complemented by the commitment from the team at Crest.

Norwich City Council has developed the site itself without a housing association or development partner. With approximately 100 new homes being provided, this represents a significant new investment for the City.

This major development by Norwich City Council of new council-owned energy efficient homes is one of the largest 100% Passivhaus scheme currently under construction. A Passivhaus Scheme is a Low Carbon scheme, where all houses and flats face South and are on target to achieve full 'Passivhaus' Certification.

We understand this will be the largest Passivhaus social housing scheme in the UK. The design seeks to provide sunny, light filled homes with very low fuel bills of approximately £150 per year.

Our scheme is dense and low rise. We have provided more houses than other schemes, which are mainly flats – thus giving better value from the site. Future maintenance has been minimised by designing flats whereby every flat has a front door onto the street, with its own staircase and lobby at street level – designing out all internal common parts. Mostly two storeys, houses are given the occasional dormer to provide a fourth bedroom. Most of the principle rooms, face south. Generous kitchen / dining rooms form the heart of each house.

“We believe that our exclusive quality product range and our ability to go above and beyond has helped deliver exactly what the client wants.”



H-14 Technical Details

LENGTH	434mm
WIDTH	267mm
GAUGE	323-343mm
COVER WIDTH (mm)	215mm ± 2.0
MINIMUM ROOF PITCH*	10°
No. OF TILES PER m ²	13.6-14.4
WEIGHT PER TILE	3.6 kg
WEIGHT PER m ² (min)	48.96 kg
BATTENS PER m ² (min)	3.0
BATTEN SIZE (mm)	50 x 25
FIXINGS	Clipped

*Low roof pitches:

As the H14 is the perfect pantile for low pitch roofs, we recommend that these fixing practices are followed:

- The roof must be counter-battened.
- A good quality roofing felt must be used and we suggest to increase the overlap by 100mm and for the joints to be taped.
- The gauge of the tiles should not be 'stretched'
- All tiles are to be mechanically fixed with purpose made tiles clips.
- Always ensure good ventilation. All areas around the roof perimeter and abutments must be properly finished as well as any areas around any 'velux type' windows. (These are the areas where potential problems are likely to occur on a low roof pitch.)

Crest's specifically designed 70° angle roofing tile.



The unique roofing system flows without interruption continuously from eave to ridge.



This high density, social housing in Norwich City Centre consists of around 40 houses and 60 flats and is a fantastic project for Crest. Working closely with the architects to supply both brick and roofing materials, the architects chose two brick types: Belgravia Buff Multi and Grosvenor Grey Multi as they wanted to mix the bricks to create a unique bespoke blend which was mixed onsite. To complement the brick work we supplied the H14 interlocking clay pantile finished in black gloss specified by the architects as historically it is found locally. *Continued on the back page >*



Crest's Belgravia Buff Multi and Grosvenor Grey Multi bricks.

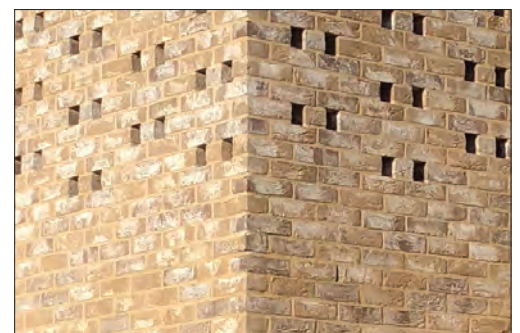
This beautiful high-quality clay roof tile was a perfect match for this special project which echos the scale and street pattern of the local Victorian housing and traditional materials of brick and tile, yet detailed in a simple and contemporary way.

The complex roofing system created some technical challenges for Crest, with a number of bespoke specials being developed for the project. The angles on the pitched roof required a specially engineered clay tile to form the beautiful roofscape with the roll of the tile pattern being read at both the mansard and ridge junctions a challenge set by the architects for Crest to deliver. Crest's talented team headed by Managing Director Arnold van Huet created a bespoke roofing tile, carefully designed at exactly 70° angle and accurate with millimetre precision enabling the roofing contractors to construct the pitched roofs to the quality the architects aspired to.

Crest have always been keen to work with like-minded businesses, this includes their European manufacturing partners. These strong working relationships have been built through mutual respect and trust over a long period of time and this enables Crest to continually enhance their offering to the benefit of their customers. In addition, these close ties have enabled Crest to become a 'virtual manufacturer' with the ability to design and develop many products specifically for the UK market in a fast, efficient manner with no compromise on the quality of the materials used.



A mix of two brick types created a bespoke and unique blend.



For more information on our **building products** or to order a **FREE** sample call us on **01430 432667**



☎ 01430 432667 ✉ info@crest-bst.co.uk 🌐 www.crest-bst.co.uk

crest
NELSKAMP
ROOFING TILES